

## TYPE 40



- Process liquid flowing through the pipe exerts pressure onto a flush-mounted flexible inner cylinder containing clean, captive liquid; completely isolating instrumentation from the process flow and preventing plugging
- Can be used for remote mounting of pressure instrument(s) with capillary
- Instrumentation can be removed for calibration, repair or replacement without interrupting the process flow
- Integral design prevents accidental breakage
- Can be used with a variety of process conditions in many applications
- Eliminates clogging typically associated with diaphragm seals used in viscous fluid applications which can lead to inaccurate pressure readings
- Assembly flanges ASME B16.1 Class 150, 2" to 10"

### APPLICATIONS

- Slurries
- Heavy sludges
- Chemical - synthetic polymers
- Diffusers - flow measurement
- Abrasive media

### SPECIFICATIONS

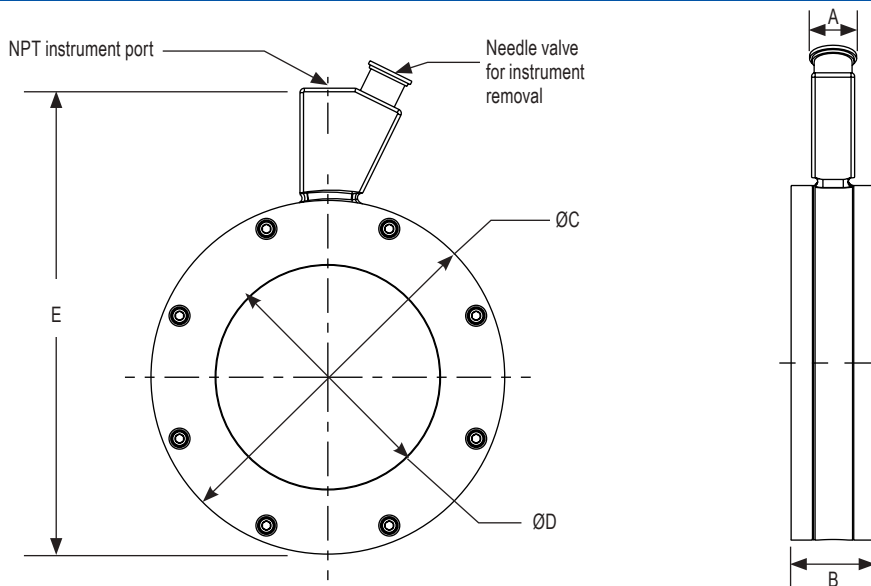
<b>Seal type</b>	Inline flanged with sleeve diaphragm			
<b>Instruments</b>	<b>Type</b>	<b>Size</b>	<b>Minimum Pressure</b>	<b>Maximum Pressure</b>
	Gauges	2-1/2" to 6"	0 psig to 30 psig	0 psig to 285 psig
	Transducers	-	0 psig to 30 psig	0 psig to 285 psig
	Switches	-	0 psig to 30 psig	0 psig to 285 psig
<b>Upper housing</b>	<b>Type</b>	Non-continuous duty		
	<b>Connections</b>	1/4" NPT, 1/2" NPT		
	<b>Materials</b>	Polyurethane enamel coated Steel, 316 Stainless Steel		
<b>Diaphragm</b>	<b>Size</b>	Sleeve style per ring size		
	<b>Materials</b>	NBR, FKM, EPDM, PTFE (Other materials available on request)		
<b>Flange materials</b>	<b>Connections</b>	Flanged, Class 150, 2" through 10"		
	<b>Materials</b>	Polyurethane enamel coated Steel, 316 Stainless Steel		
<b>Bolting</b>	Zinc-plated Steel, optional Stainless Steel			
<b>Operating temperature</b>	-30 °F to 140 °F, based on materials of construction and fill fluid			

ORDERING INFORMATION			
TYPE	40 Annular Ring	40BT Bolt-Through Annular Ring	
INSTRUMENT CONNECTION SIZES	02 1/4" NPT	04 1/2" NPT	
HOUSING MATERIALS	C Carbon Steel	S 316 Stainless Steel	
DIAPHRAGM MATERIALS	B NBR	V FKM	T PTFE E EPDM
PIPE SIZES	16 2" Pipe	32 4" Pipe	48 6" Pipe 80 10" Pipe
	24 3" Pipe	40 5" Pipe	64 8" Pipe
FLANGE MATERIALS	C Carbon Steel	S 316 Stainless Steel	

Please consult your local NOSHOK Distributor or NOSHOK, Inc. for availability and delivery information.

**EXAMPLE**

Type .....	40	40	-	02	C	-	B	-	16	-	C
Instrument connection size .....	1/4" NPT										
Housing material .....	Carbon Steel										
Diaphragm material .....	NBR										
Pipe size .....	2" pipe										
Flange material .....	Carbon Steel										

**Type 40**


NOMINAL PIPE SIZE							
	2"	3"	4"	5"	6"	8"	10"
<b>A</b>	0.76" (19 mm)	0.76" (19 mm)	0.76" (19 mm)	0.76" (19 mm)	0.76" (19 mm)	0.76" (19 mm)	0.76" (19 mm)
<b>B</b>	2" (51 mm)	2" (51 mm)	1-1/2" (38 mm)	1-1/2" (38 mm)	1-1/2" (38 mm)	1-1/2" (38 mm)	1-1/2" (38 mm)
<b>C</b>	4-7/32" (107 mm)	5-15/32" (139 mm)	6-9/32" (160 mm)	7-9/16" (192 mm)	8-7/16" (214 mm)	10-5/8" (270 mm)	12-13/16" (325 mm)
<b>D</b>	2" (51 mm)	3" (76 mm)	4" (102 mm)	5" (127 mm)	6" (152 mm)	8" (203 mm)	10" (254 mm)
<b>E</b>	7.18" (182 mm)	8.44" (214 mm)	9.27" (235 mm)	10.53" (267 mm)	11.40" (289 mm)	13.60" (345 mm)	15.77" (400 mm)